



**ALASKA DIVISION OF HOMELAND SECURITY &  
EMERGENCY MANAGEMENT**  
SITUATION REPORT 24-018 • January 18, 2024



Toll-Free 1.800.478.2337

Anchorage Area 907.428.7000

SEOC 907.428.7100

<p><b><u>SEOC Preparedness Level</u></b>  Level 1 – Routine Operations</p>	<p><a href="http://ready.alaska.gov">http://ready.alaska.gov</a></p>	<p><b><u>National Terrorism Advisory System:</u></b>  <a href="#">Read the NTAS Bulletin here</a></p>
<p><a href="#">Maritime Security (MARSEC)</a> Level:1- Minimum Appropriate Security Measures</p>	<p>WHO Novel Coronavirus Pandemic (COVID-19): <a href="#">2019 Novel Coronavirus</a></p>	<p><b><u>Alaska Military Installation Force Protection Level:</u></b> FPCON Bravo</p>

(Significant changes from previous situation reports are red.)

**Significant Issues:**

**Shishmaref**

SEOC continues to provide inter-agency technical assistance with the fuel shortage in Shishmaref.

**Wrangell Landside Disaster**

State Individual Assistance application hotline and website is open for Wrangell and Prince of Wales Island residents at <https://www.ready.alaska.gov/Recovery/IA> or by phone 1(844) 445-7131. The deadline to apply for State Individual Assistance is January 27, 2024.

**Quinhagak Power Outage Disaster**

State Individual Assistance application hotline and website is open for Quinhagak residents at <https://www.ready.alaska.gov/Recovery/IA> or by phone 1 (844) 445-7131. The deadline to apply for State Individual Assistance is March 2, 2024.

**State of Alaska Department of Health (DOH)**

The DOH stands ready to assist with all aspects of public health and, in the event of a public health emergency, is supported by the SEOC and other state departments as required.

For current information, see: <https://health.alaska.gov/dph/Pages/default.aspx>  
<https://health.alaska.gov/dph/Emergency/Pages/prepared/default.aspx>

**NTAS Bulletin**

The U.S. Department of Homeland Security issued an updated National Terrorism Advisory Bulletin on May 24, 2023. The current and expired bulletins can be viewed at the below link.

<https://www.dhs.gov/national-terrorism-advisory-system>

## Travel Alerts and Conditions

- Avalanche debris on roadway on Thane Rd Southbound near mile marker 1. All lanes closed.

For current driving conditions, dial 511 or visit: <https://511.alaska.gov/>

## Barry Arm Landslide / Tsunami Risk

For the latest information on the Barry Arm Landslide and Tsunami risk, click here:

<https://dggs.alaska.gov/hazards/barry-arm-landslide.html>

## Earthquakes

United States Geological Service (USGS) Earthquake Information: <http://earthquake.usgs.gov/>

National Tsunami Warning Center: <http://tsunami.gov/>

## Alaska Volcanoes

**Kanaga** Alert Level **Advisory** and Aviation Color Code: **Yellow**

**Great Sitkin** Alert Level: **Watch** and Aviation Color Code: **Orange**

**Shishaldin** Alert Level: **Advisory** and Aviation Color Code: **Yellow**

For Alaska Volcano updates, go to: <https://www.avo.alaska.edu/>

## Air Quality Index (AQI) Advisories

Active advisories/episodes are in effect for Fairbanks Zone, North Pole Zone.

For the most up-to-date Air Quality Index Advisories:

<http://dec.alaska.gov/Applications/Air/airtoolsweb/Home/Index>

## Spills of Oil and Hazardous Substances

The Alaska Division of Environmental Conservation (ADEC) Spill Prevention and Response page is located at:

<https://dec.alaska.gov/spar/>

## Alaska Cyber Security Information

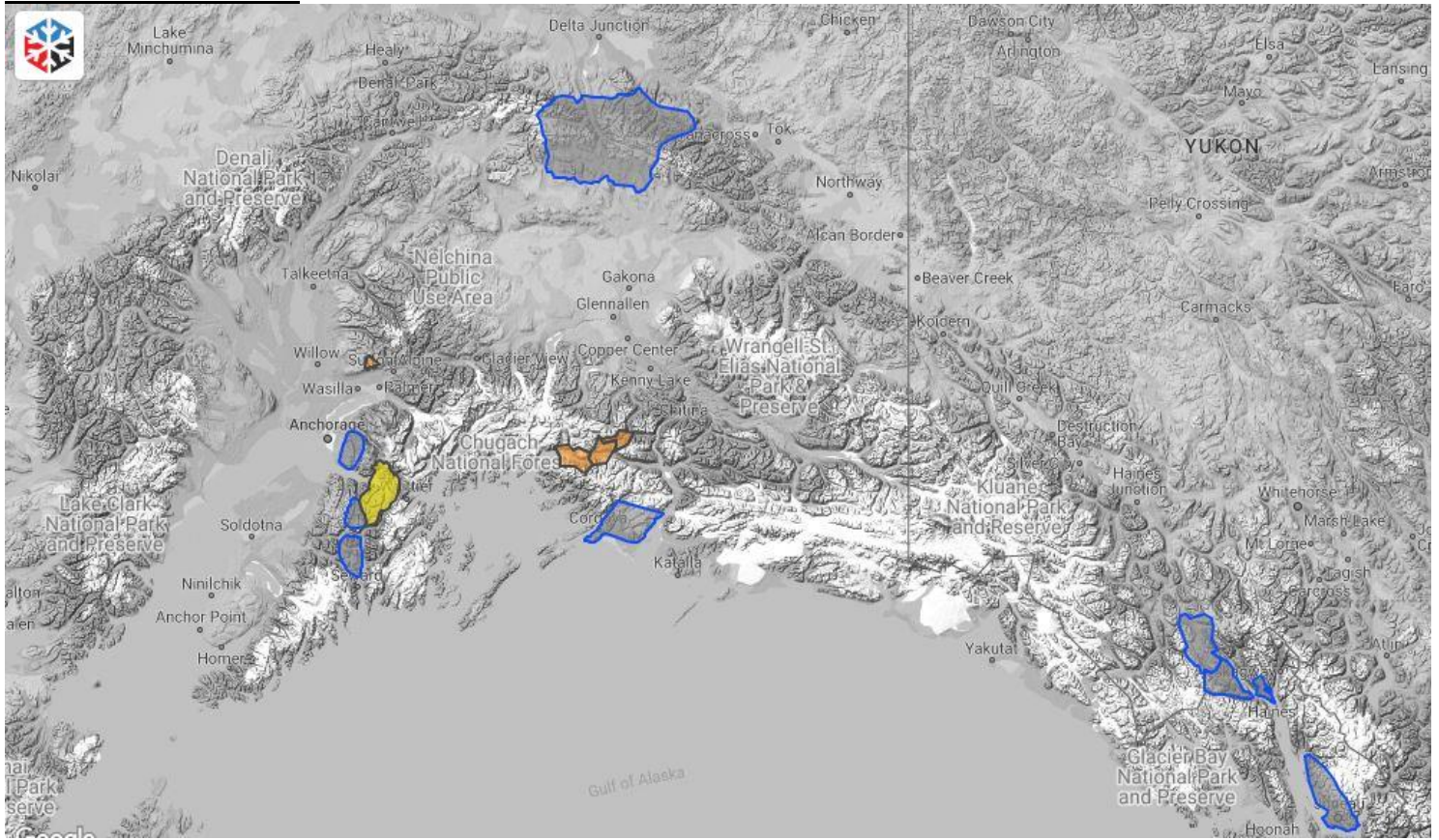
State Employees may sign up for cybersecurity notifications and alerts at

<https://oit.alaska.gov/security>

Cybersecurity and Infrastructure Security Agency (CISA)-Cybersecurity Services and Tools:

[www.cisa.gov/free-cybersecurity-services-and-tools](http://www.cisa.gov/free-cybersecurity-services-and-tools)

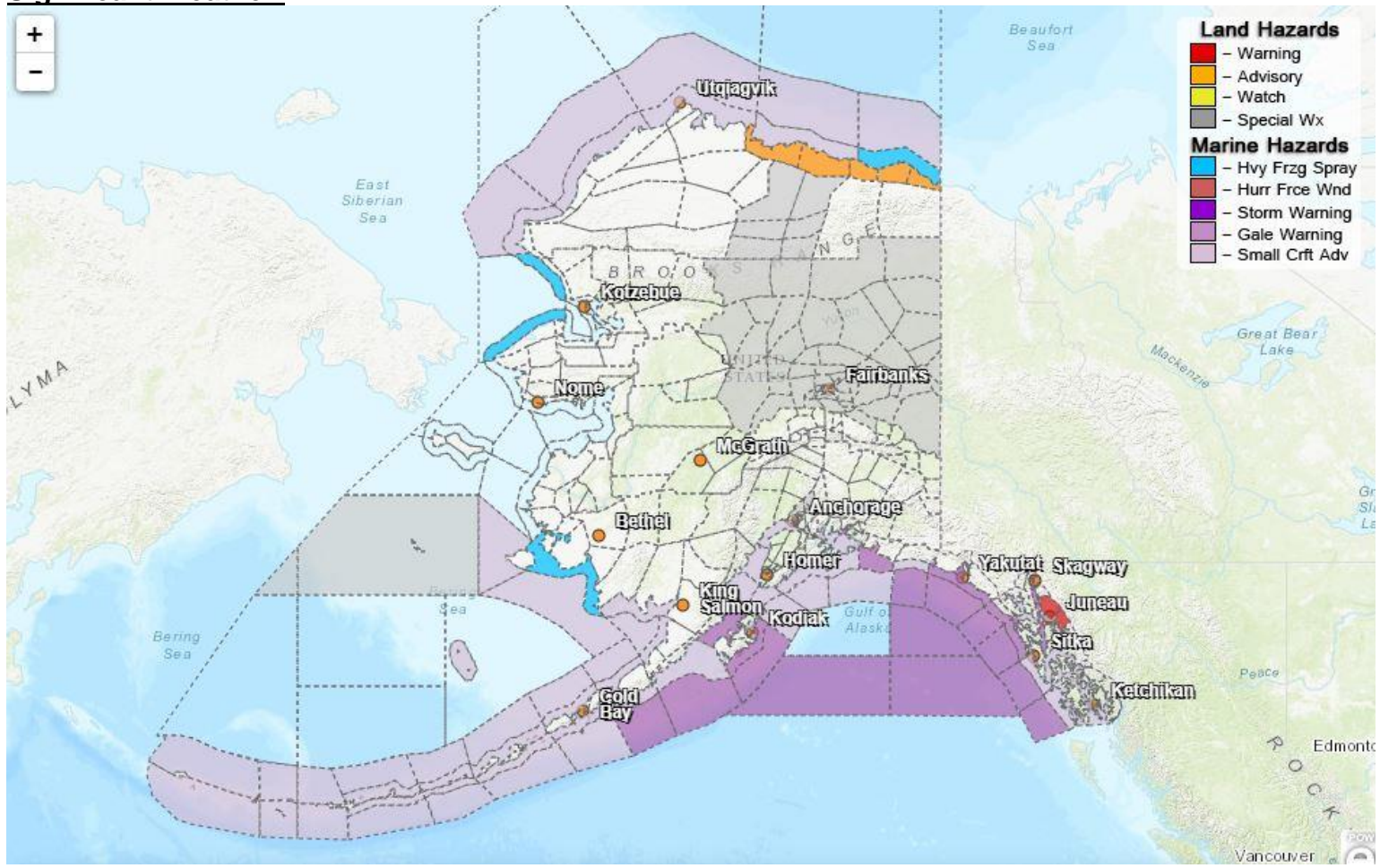
## Avalanche Hazards:



- Turnagain Pass – Start out Moderate and rise to Considerable this afternoon above 2,500 FT. Above 1,000 ft will remain moderate and low below 1,000ft.
- Valdez – Considerable at all altitudes
- **Hatcher Pass - Considerable at all altitudes**

For more information and the most current avalanche conditions, go to <https://alaskasnow.org>

## Significant Weather:



### High Wind Warning

- City and Borough of Juneau and until Thursday evening.

### Blizzard Warning

- Eastern Beaufort Sea Coast until 3pm this afternoon.

### Special Weather Statement

- Matanuska Valley through Thursday evening
- South Slopes of The Eastern Brooks Range; South Slopes of The Central Brooks Range; Upper Koyukuk Valley; Dalton Highway Summits; Yukon Flats; White Mountains and High Terrain South of the Yukon River; Fortymile Country; Delta Junction; Upper Chena River Valley; Tanana Flats; Eielson AFB and Salcha; Goldstream Valley and Nenana Hills; Chatanika River Valley; Two Rivers; Fairbanks Metro Area; Nenana; Central Interior prolonged arctic blast until Wednesday.
- Central Arctic Plains; Central Brooks Range until Saturday afternoon.

### Winter Weather Advisory

- Central Beaufort Sea Coast; Eastern Beaufort Sea Coast until midnight Thursday.

### Air Quality Alert

- Fairbanks Metro Area until 2pm Thursday.

For more information and the most current weather, Watches / Warnings / Advisories go to:

<https://www.weather.gov/arh/>

**The Next Situation Report** will be **January 19, 2024**. A significant change in the situation or the threat level will prompt an interim report. This report is posted on the internet at <https://ready.alaska.gov/sitrep>.

To register for email distribution, go to <http://list.state.ak.us/mailman/listinfo/dhsem.situation.report>. Direct questions regarding this report to the SEOC at 907-428-7100 or [seoc@alaska.gov](mailto:seoc@alaska.gov).